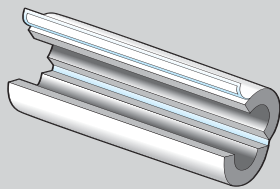
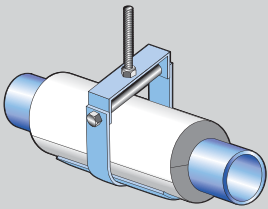


Quick Specification Guide

INSUL-PHEN PHENOLIC *Insulation*



The following guidelines should be used for the specification and application of Insul-Phen HCFC free closed-cell rigid phenolic foam insulation.

- **Insul-Phen** has a .18 k-factor with a 5.56 R-Value at 1" thick. **Insul-Phen** is 100% CFC HCFC and halogen free.
- It exceeds ASTM E84 25/50 flame and smoke up to 3" thick. **Insul-Phen** is a minimum 92% closed cell.
- Four densities (4) are available: 2.5# (.18 K factor), 3.75# (.19 K factor), 5.0# (.21 K factor), and 7.5# (.23 K factor).
- Three factory applied jackets are available; ASJ, VentureWrap and VentureClad.
- VentureWrap and VentureClad are both 0 perm and do not promote mold growth.
- Fittings and valves are fabricated in mitered sections and/or factory molded pieces.

SPECIFICATION/APPLICATION - Insulphen Rigid Phenolic Insulation

Piping: Ensure pipe is dry and free of debris. Coating the pipe for rust prevention is not required. Rust may be present on the pipe before installation and also will occur under any type of insulation with moisture present. If priming of the pipe is requested by owner or their representatives use Sherwin Williams PRO-Cryl® Universal Primer or approved equivalent.

Chilled Water:

- Indoor conditioned areas and Existing buildings use minimum 1" thick. Indoor conditioned areas use 1" thick **Insul-Phen** 2.5# density up to 10" pipe and 1½" thick on 12" and larger.
- Joints and seams are to be firmly butted together.
- Vapor stops are to be installed/applied at 21 foot intervals using Childers CP-76 joint sealer or approved equal.
- Fittings and valves are to be of the same thickness as the adjoining insulation. Secure in place with ½" wide fiberglass filament tape and vapor seal with fab cloth embedded in Fosters 30-80AF or approved equal.
- **New construction, indoor non-conditioned areas** such as crawl space, attic, or mechanical rooms where outdoor air is present, or outdoors, **use minimum 1½" thick. Joint seal** and butt joints with CP-76 or approved equal. **In mechanical rooms or high traffic areas** subject to abuse or damage, **use 3.75# density** from the ground **up to 7 feet high.**

Heating Hot Water:

Insul-Phen 1 to 1½" thick will meet the International Energy Code (803.3.7) for all pipe sizes.

Pipe Supports:

The bottom 180 degrees of the support will be high density material based on the table below.

For non standard application contact us for design calculations

Foam Density	Pipe Size	Saddle	Foam & Saddle Length	Centers
2.5#	4" and smaller	18 Gauge	12"	10'
3.75#	5" to 10"	16 Gauge	12"	10'
5.0#	12" to 16"	14 Gauge	12"	10'
5.0#	18" to 20"	10 Gauge	18"	10'
7.5#	24" and larger	8 Gauge	24"	10'

Other information:

This information is furnished without warranty, expressed or implied, except that it is accurate to the best knowledge of Resolco Inc. The data on this document relates only to the specific material designated herein. Resolco Inc. assumes no legal responsibility for use or reliance upon this data. For information regarding specific applications of the product please contact Resolco Inc.

